



INDUSTRIAL COATINGS AND THINNERS

35
Years of
Excellence

www.paintachemindia.com

With more than 35 years of manufacturing experience in Coating and Thinners, PCI is well accepted as a reliable and trustworthy partner by customers. We serve multiple market segments and a variety of customers, from large scale manufacturers and exporters to small scale distributors and dealers.

PCI ensures direct, personal interaction with the customers, thereby eliminating the high cost involved in multi- layered distribution channels.

PCI QUALITY POLICY

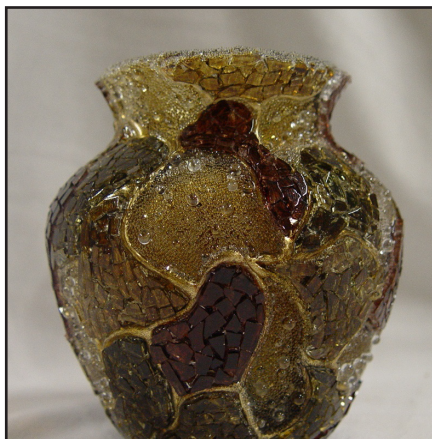
We delight customers with world class products and prompt service at competitive price.

We work with Pull approach by understanding the need of the market and bringing the desired products to fulfil the market requirements. Total Quality Management and the competent pricing policy at PCI are aimed to realize maximum leverage for its clients. Our product follows one specification of bringing customers the greatest satisfaction.

Our R&D division is always striving for better product for customers that add colours and value to them. With a commitment to excellence, we expect to achieve higher levels of customer satisfaction in the years to come.

Quality Objectives:

- Customer driven, continuous improvement.
- Encouraging innovation & technology updation.
- Caring of requirements of end users.
- Compliance with documented quality systems.



Epoxy casting lacquer is a two component solvent less high quality epoxy coating with water white curing agent who is mainly used in casting, general adhesives & other industrial products.

A: B 2:1

Coverage: depends on the thickness of the film.

Drying Time: Tack free time \approx 2 hrs.
Hard Time= 3-4 hrs.
Complete curing overnight



Epoxy clear & epoxy paints are high quality two component paints specially formulated to cure at room temperature. Epoxy top coat has outstanding chemical resistance with high gloss and excellent hardness. It gives adhesion to many substrates, excellent flexibility & abrasion resistance.

A: B	4:1
Coverage:	Depends on the thickness of the film.
Drying Time:	Tack free time \approx 20 Mins Hard Time= 3-4 hrs. Complete curing overnight



EPOXY THERMOSETTING CLEAR

Epoxy Thermosetting clear is a single component clear cured at elevated temperature. ETC has very high resistance to water, detergents, mild acids & alkalis, chemicals & solvents. It has good flexibility, abrasion resistance, colour retention, excellent corrosion resistance & improved surface adhesion.



PU GLASS COAT

P.U. Glass Coat is a two component premium quality coatings, specially Formulated to coat on glass items. PU Glass Coat has excellent weather resistance. It shows excellent resistance to water, salt water, alcohol, oil & grease.

Technical Data

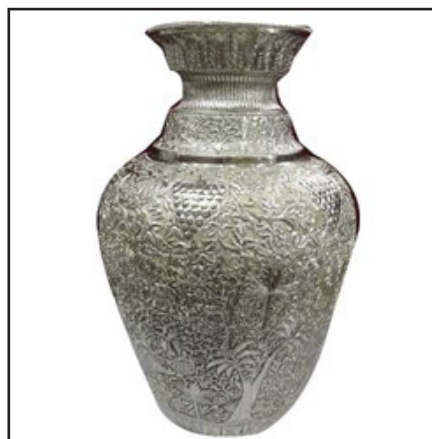
A: B	9:1
Coverage:	depends on the thickness of the film.
Drying Time:	Tack free time ≈ 10 Mins Hard Time= 2-3 hrs. Complete curing overnight

Actual coverage may vary from the quoted coverage due to factors such as method and condition of application and surface roughness.



PU Std. Top Coat is two component systems designed to cure at room temperature. It consists of Base component & Hardener component which on mixing form tough film with outstanding durability, chemical & weather resistance. An effective Top Coat for petrochemical refinery and fertilizer industries. The system is useful for maintenance coating, structural coating as well as for floor coating.

A: B 9:1
Coverage: depends on the thickness of the film.
Drying Time: Tack free time \approx 10 Mins
Hard Time= 2-3 hrs.
Complete curing overnight



It is a premium quality Acrylic clear suitable for silver, glass, brass & other metals. It gives non-yellowing, flexible, high gloss film on substrate.

Coverage: depends on the thickness of the film.
Drying Time: Tack free time \approx 5 Mins
Hard Time= 2-3 hrs.
Complete curing overnight



ACRYLIC THERMOSETTING CLEAR

It is a non-yellowing coat with high gloss & clarity. It has a low thinner intake and better DFT build up with an excellent Outdoor Durability and a very good mark resistance.

Technical Data

Coverage: depends on the thickness of the film.

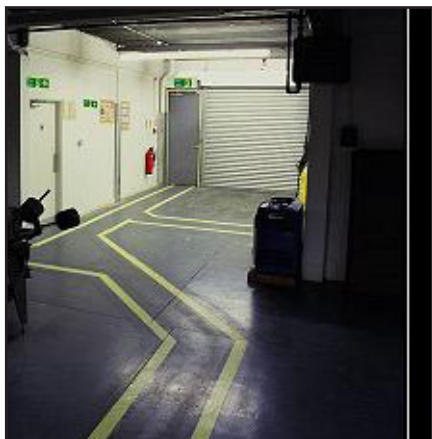
Curing Time: 20-25 mins. At 120°C.



HEAT RESISTANT PAINTS

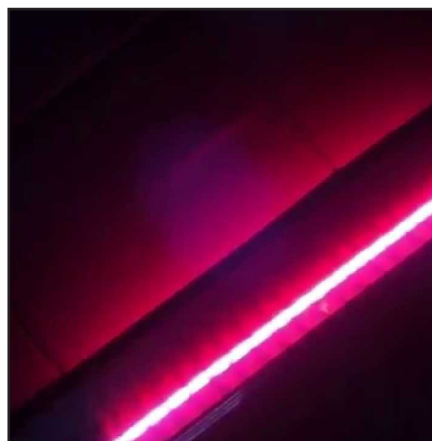
These coatings are specially developed for various applications such as tractor silencers, two wheeler silencers, automobile silencers, generators, barbeques, etc where high temperature requirements are prevalent.

It is easy for application and suitable for external application with good corrosion resistance after achieving high temperature and has lower voc.



PHOSPHORESCENT COATINGS

Phosphorescent coatings characterized by their ability to absorb and store the energy of natural/artificial light and slowly emit it in the form of visible light in the dark. The cycle of absorbing, storing and emitting is practically infinite. The afterglow phenomenon is also referred to as phosphorescence and hence these coatings are also known as phosphorescent (Glow-in-the-Dark) coatings.



INFRA-RED REFLECTING PAINTS

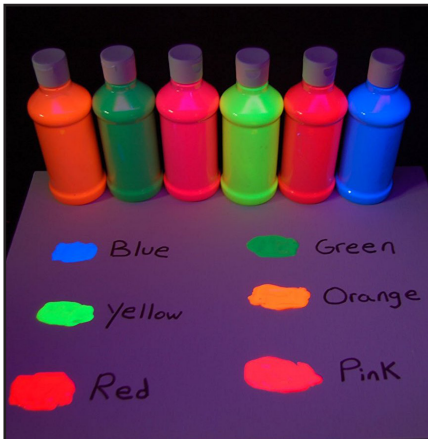
Infra-red reflecting (IRR) paints are functional colorants which have the capability to reflect the infra-red radiation. 49% of the sun's energy is composed of infra-red radiation. This infrared radiation is solely responsible for generating heat.

IRR Paints prevent expansion and degradation due to heat and extend service life of products. It reduces air conditioning costs due to reduction in "heat-island" effect.



RETRO REFLECTIVE COATINGS

Retro-Reflective Pigments are comprised of aluminum coated spherical glass beads and strongly reflect the incident light.



FLUORESCENT COATINGS

We offer superior quality daylight fluorescent coatings.

Since 35 years now, we have been offering the premium grade Thinners. We are Importers, Industrial Supplier & Manufacturers of Thinner. We directly import top grade thinners which are further used in making best quality thinners which are completely free from any contamination. Thinners we offer, fulfills all the safety and quality compliances according to the accepted.



RETARDER THINNER

- Delays evaporation
- Suitable for high temperature, humidity or large area application
- Its slow drying property makes paint application easier and improves leveling



POLYURETHANE THINNER (PU THINNER)

It is recommended for the dilution of polyurethane coatings



UNIVERSAL THINNER

It is a general purpose thinner used for thinning industrial paints and coatings



ACRYLIC THINNER

- It is used for thinning all kind of acrylic paints.
- Increase paint film smoothness and solubility.
- High quality slow drying thinner.



EPOXY THINNER

Designed for use with most epoxy coatings



SUPER NITROCELLULOSE THINNER (SUPER NC THINNER)

- High quality thinner for nitrocellulose paints.
- Thinner for general purpose paints
- 100% Non Alcoholic.



MELAMYNE THINNER

Recommended for the dilution of melamyne based coatings



STOVING THINNER

Recommended for the dilution of stoving paints



ENAMEL THINNER

Used to thin down solvent-based enamel paints

PAINA CHEM [INDIA]

AN ISO 9001:2008 CERTIFIED COMPANY

Automotive Paints | Thinners | Industrial Coating

4th Milestone Meerut Road, Hapur-245101 (U.P.)

Phone : +91-99970 82288, +91-98370 42829

Email : contact@paintachemindia.com